

## RATIONALE

The treatment of patients with chronic myeloid leukemia (CML) deeply evolved during last years. In particular, the introduction of Tyrosine Kinase inhibitors (TKIs) allowed a chronicization of the disease.

Having reached the goal of survival almost equal to that of a control population without leukemia, the main questions regard the treatment of the small number of patients still resistant to therapy, the choice of firstline TKI according to the patient's profile and his primary hematologic objective, the long-term toxicity problems due to continuous TKI intake, the de-scalation of therapy based on the concept of minimal effective dose in state of the maximum tolerated dose, the need to increase the percentage of patients who can maintain a continuous remission even in the absence of TKI therapy (Treatment Free Remission - TFR), and the quality of life of patients.

The meeting, is also devoted to the improvements of the Ph-negative myeloproliferative disorders (MPN), such as the Polycitemia Vera, the Thrombocytomia and moreover the Myelofibrosis.

The most influential and distinguished Italian and International Hematologists will discuss on the most important open questions and projects regarding the CML and the Ph-neg MPN.

## FACULTY

Jane Apperley (London)  
Simona Bernardi (Brescia)  
Monica Bocchia (Siena)  
Massimiliano Bonifacio (Verona)  
Massimo Breccia (Roma)  
Fausto Castagnetti (Bologna)  
Daniela Cilloni (Torino)  
Mirko Farina (Brescia)  
Carmen Fava (Torino)  
Nico Gagelmann (Hamburg)  
Sara Galimberti (Pisa)  
Carlo Gambacorti Passerini (Monza)  
Enrico Gottardi (Torino)  
Antonella Gozzini (Firenze)  
Paola Guglielmelli (Firenze)  
Alessandra Iurlo (Milano)  
Barbara Izzo (Napoli)  
Roberto Latagliata (Roma)  
Thomas Lion (Vienna)

Alessandro Lucchesi (Meldola)  
Michele Malagola (Brescia)  
Giovanni Martinelli (Meldola)  
Donal McLornan (London)  
Barbara Mora (Milano)  
Olga Mulas (Cagliari)  
Francesca Palandri (Bologna)  
Giuseppe A. Palumbo (Catania)  
Fabrizio Pane (Napoli)  
Nicola Polverelli (Pavia)  
Philippe Rousselot (Le Chesnay)  
Domenico Russo (Brescia)  
Giuseppe Saglio (Torino)  
Susanne Saussele (Mannheim)  
Simona Soverini (Bologna)  
Giorgina Specchia (Bari)  
Mario Tiribelli (Udine)  
Anna Vedovati (Brescia)  
Daniela Zizioli (Brescia)

Under the Patronage of



Con il Patrocinio di SIE  
Società Italiana  
di Ematologia



### ORGANIZERS

Domenico Russo, Giuseppe Saglio, Nicola Polverelli

### SCIENTIFIC COMMITTEE

Simona Bernardi, Michele Malagola, Alessandro Leoni

### REGISTRATION

Registration (for attending online or onsite) is free but must be finalized accessing the Organizing Secretariat website: [www.studioprogress.it](http://www.studioprogress.it) in "Prossimi Convegni". The Organizing Secretariat will send an acceptance e-mail to confirm registration.

### E.C.M.

The Conference has been accredited by the Italian Ministry of Health:  
Event n. 652-405010  
Provider n. 652

10 ECM credits for n. 100 participants Physicians, Nurses, Biologists, TSLBs, Pharmacists

### CONGRESS VENUE

Centro Congressi Paolo VI  
Via Gezio Calini, 30  
25121 Brescia (BS)  
ITALY

### ORGANIZING SECRETARIAT



StudioProgress Snc  
Via Cattaneo 51  
25121 Brescia (Bs)  
Tel. +39 (0)30 290326  
E-mail [info@studioprogress.it](mailto:info@studioprogress.it)  
Web [www.studioprogress.it](http://www.studioprogress.it)

With the unconditional contribution of



# Second International "Michele Baccarani" Conference CML and Ph negative Myeloproliferative Disorders: Biological - Traslational - Clinical Features and Perspectives

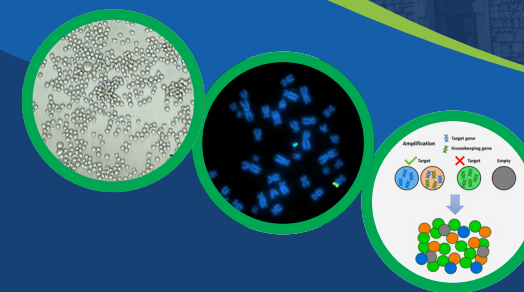
Centro Congressi Paolo VI  
Brescia, 22-23 Marzo 2024

### Organizers

D. Russo  
G. Saglio  
N. Polverelli

### Scientific Secretariat

S. Bernardi  
M. Malagola  
A. Leoni



## FIRST DAY 22 MARZO 2024

14.00-14.15 Presentation of the Meeting  
**Giuseppe Saglio, Domenico Russo, Nicola Polverelli**

### 14.15-15.45 **Session 1 • CML Biology: What's new**

*Chairmen: Giovanni Martinelli, Giorgina Specchia*

How searching Ph+ LSC (15 Min)

**Monica Bocchia**

Genetic instability of Ph+ LSC: primary vs secondary (15 Min)

**Simona Soverini**

Added value of next generation over Sanger sequencing to determine outcome after resistance to first line TKI therapy (15 Min)

**Anna Vedovati**

How monitoring BCR/ABL1 transcript (15 Min)

**Simona Bernardi**

How targeting Ph+ LSC (15 Min)

**Daniela Cilloni**

Zebrafish for testing efficacy and safety of TKIs (15 Min)

**Daniela Zizioli**

15.45-16.15 *Coffee break*

### 16.15-17.15 **CML Session 2: Advances in CML treatment in Europe**

*Chairmen: Susanne Saussele, Fabrizio Pane*

In Italy (20 Min)

**Fausto Castagnetti**

In France (20 Min)

**Philippe Rouselot**

In Germany (20 Min)

**Susanne Saussele**

### 17.15-19.30 **CML Session 3: Moving to personalized CML treatment**

*Chairmen: Giuseppe Saglio, Domenico Russo*

#### **I Part**

*Is the survival reached for all CML patients* - Discussants (20 Min)

Yes

**Olga Mulas**

No

**Mario Tiribelli**

*What are the new objectives for CML pts?* - Discussant (20 Min)

Cure

**Fausto Castagnetti**

Quality of Life

**Michele Malagola**

*TFR for all?* - Discussants (20 Min)

Yes

**Carmen Fava**

No

**Alessandra Iurlo**

*Escalation for eradication* - Discussants (20 Min)

Yes

**Massimo Breccia**

No

**Mirko Farina**

18.35

#### **II part**

*Different drug and/or different strategies for different patients?*

Clinical case 1 (adult 73yy low risk pt) - Discussant (15 min)

**Massimiliano Bonifacio**

Clinical case 2 (adult 37yy int risk pt) - Discussant (15 min)

**Antonella Gozzini**

Clinical case 3 (adult 56yy high risk pt) - Discussant (15 min)

**Roberto Latagliata**

Discussion

19.30

End of the first day

## SECOND DAY 23 MARZO 2024

### 09.00-10.30 **Session 4 - Driving the future in CML Therapy**

*Chairmen: Susanne Saussele, Giuseppe Saglio*

Combinatorial treatment options for highly resistant BCR::ABL1 compound mutations (20 Min)

**Thomas Lion**

Reduction of TKI dosage in maintenance therapy (20 Min)

**Michele Malagola**

What do we have to fear as Long term Toxicity? (20 Min)

**Carlo Gambacorti Passerini**

What is new in ELN guidelines 2024 (20 Min)

**Jane Apperley**

Discussion

10.30-11.00 *Coffee Break*

### 11.00-11.45 **Session 5 - News from Labs**

*Chairmen: Giovanni Martinelli, Simona Bernardi*

New diagnostic and prognostic tools (20 Min)

**Sara Galimberti**

How to move from RTq-PCR to dPCR Labnet (25 Min)

**Enrico Gottardi and Barbara Izzo**

Discussion

### 12.00-13.00 **Baccarani Lecture • CML: the story's not over yet!**

**Jane Apperley**

13.00-14.30 *Lunch Break*

### 14.30-15.30 **Session 6 - Myelofibrosis: the route to cure**

*Moderator: Donal McLornan, Nicola Polverelli*

2024 updates on risk stratification and medical treatment options (15 Min)

**Francesca Palandri**

New drugs and integrated approaches: is there a need for novel outcome measures? (15 Min)

**Giuseppe A. Palumbo**

Role of transplant in MF in contemporary years: who and when (15 Min)

**Nico Gagelmann**

The importance of cooperative studies: the experience of the Chronic Malignancies Working Party of the EBMT (15 Min)

**Donal McLornan**

### 15.30-16.30 **Session 7 - Evolving landscape in Ph- MPNs**

*Moderator: Nico Gagelmann, Domenico Russo*

MPNs: an example of inflammatory disease (15 Min)

**Alessandro Lucchesi**

New biological insights into the pathogenesis and progression of MPNs (15 Min)

**Paola Guglielmelli**

Current management and unmet needs in ET and PV (15 Min)

**Barbara Mora**

16.30 End of second day

